



Issue 2

August 1st, 2016

Seeds have germinated and the plants are steadily growing. Have you seen the young corn girls and the bean boys graciously dancing? Bursting with life, the efficient ants are building their houses. Let's feast and celebrate the harvest!



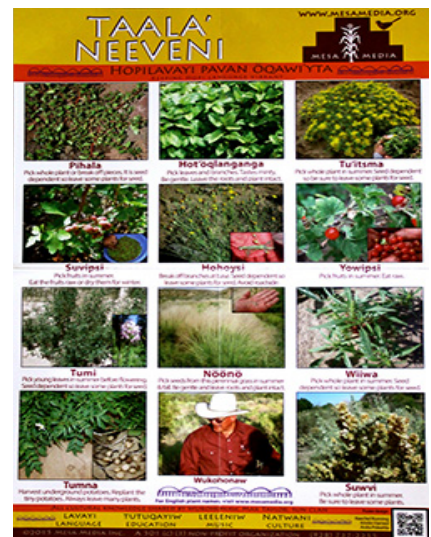
TAALA' NEEVENI!
SUMMER PLANTS TO HARVEST!

The land is providing us with nutritious food at this time of the year. So why not add these natural ingredients to our favorite recipes? Wukohonaw shares his knowledge on the Tal'angnawit Neeveni poster. Can you identify the plants on the poster? How many of these can you find? Max Taylor gives valuable advice on the way each plant should be harvested, so that we can enjoy them again year after year.

Mesa Media would love to hear your stories and recipes using these plants. Please share with us!

Poster available through Mesa Media.

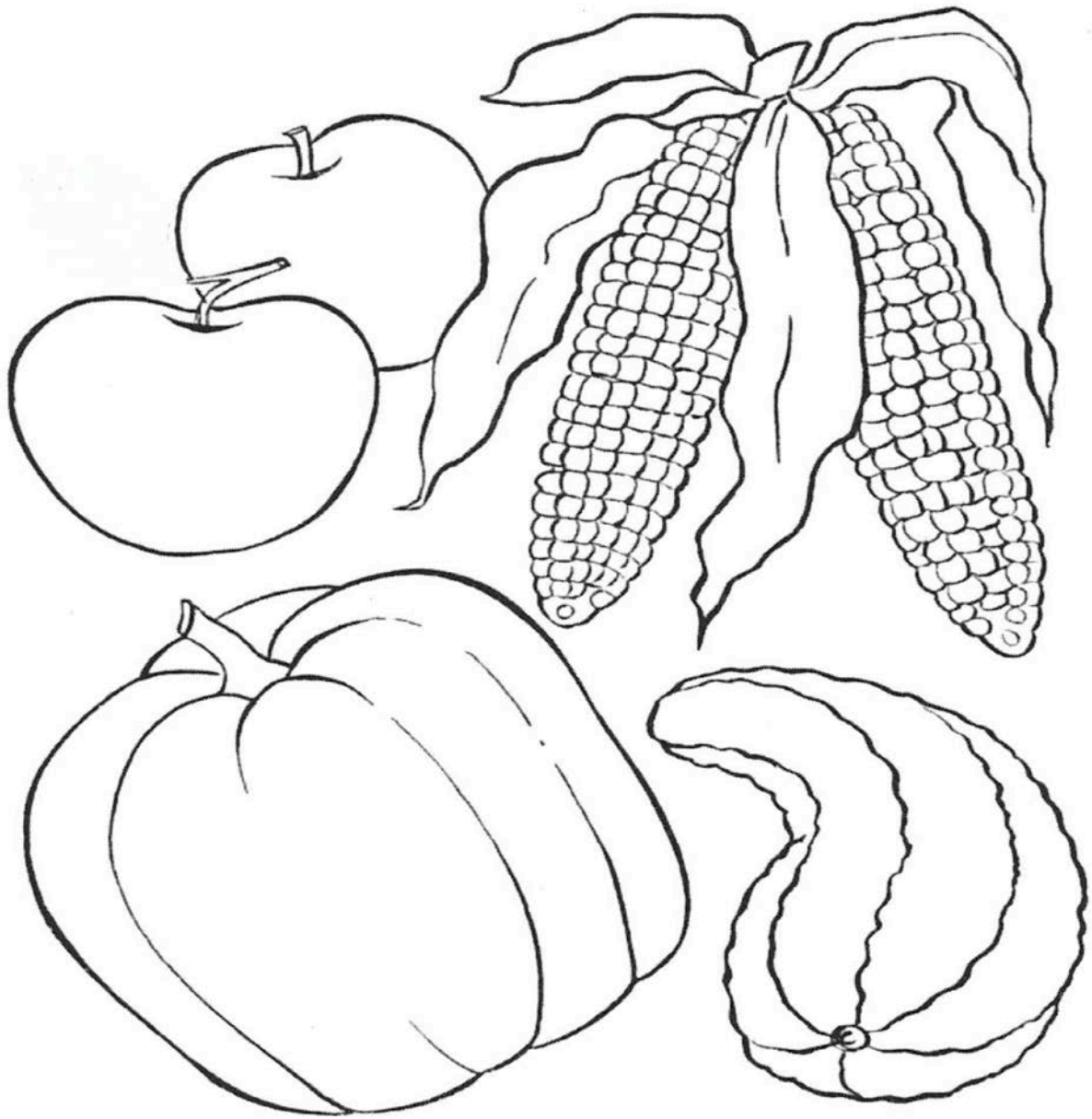
http://mesamedia.org/Contact_us.html



NAAT AW TUMALA'YYUNGWA:
WORK IN PROGRESS:

- Mesa Media's first **Hopi coloring book** for Hopi by Hopi! Coming out this Christmas season.
- The **Hopi language app**.
- **2017 Hopi calendar**. Reserve yours now at http://mesamedia.org/Contact_us.html
- Hopi Pottery Festival

Natwani Kuwan lelwi'i !



Yep lööyö mansaanat,
pu' sami, pu' piw patnga.

Here are two apples,
and corn, and also a pumpkin.



SEN UM YANG HOPI LAVAYIT TUWANI? CAN YOU FIND THESE HOPI WORDS?

Time for a Hopilavayi challenge. Can you unscramble the following Hopi words? The first 5 individuals to send the completed puzzle to Mesa Media with the correct answers will get a 2016 Hopiyaasangwni (Hopi calendar). Let's get started!

Send your answers to: http://mesamedia.org/Contact_us.html

Three Sisters: Corn

1. ATVSAKS'WSTAATA _____
Speckled, Small
2. QAÖSÖQTA' _____
White
3. IÖAT'KANSQ _____
Multicolored kernels
4. SAATVAWTSTKAI _____
Sweet, Short-Eared
5. TATWAKIAHANPAS _____
Sweet Introduced Hybrid
6. UYRURAÖQP _____
Blue speckled with White
7. AAQSIMÖ' _____
Blue-Grey
8. OAOKNÖNIQ' _____
Orange with White marks
9. 'HQAÖOPQO _____
Northeastern Pueblo
10. MOKOKA _____
Purple
11. S'TVAHOKAOTAS _____
Speckled Blue and White
12. TASWKATI _____
Sweet
13. AÖAAPQ'L _____
Red
14. HAQOAYOPÖYQÖ _____
White-Popping
15. ÖAQAPSWA'K _____
Blue
16. YAÖISQKA' _____
Yellow
17. 'AQAATLÖPS _____
Pink



SEN UM HOPI? HOW HOPI ARE YOU?

Take the following test to find out:

1. Choose the answers that fit you & circle the appropriate number.
2. Add up your points.
3. Go find the answer at the end of this newsletter.

HOPI CHARACTER TRAITS TEST

	Always	Sometimes	Never
I live with humility	1	2	3
I have respect for others	1	2	3
I tend to have negative expectations	3	2	1
I respect the sacred nature of self	1	2	3
I am lazy	3	2	1
I respect the sacred	1	2	3
I acknowledge and respect kinship & clanship	1	2	3
I am a careful listener	1	2	3
I am timid	3	2	1
I show care in the way I speak	1	2	3
I am appreciative and thankful	1	2	3
I get mad	3	2	1
I tend to overburden myself & my mind	3	2	1
I am generous and kind	1	2	3
I show positive feelings toward others	1	2	3



HAKIMUY HEPNUMYA... MESA MEDIA IS SEEKING...

...Hopi language speakers, to record their voices for the new language application. For more information, contact Anita @ 928-737-2255



HIN UM AW WUUWA? WHAT DO YOU THINK?

Our next newsletter will be out in November. Your comments and suggestions are welcome. Send them to: http://mesamedia.org/Contact_us.html



ITAM HIITA AKW WUNGWIWISA? WHAT KEEPS US GROWING?

The work of Mesa Media would not be possible without the generous support of our institutional and private donors. Eskweli/Askwali/Kwakwha donors! We pledge to revitalize the Hopi language.

Last but not least, we want to recognize the dedication of our volunteers who give hours and days of their priceless time, and offer their many talents to support the development, production and sharing of Hopi language resources.

Mesa Media gratefully acknowledges the contributions.

Eskweli! Askwali! Kwakwha!

You too can be part of this great journey. Join us on the path where good Hopi life and language are vibrant and flourishing. Celebrate feasting and harvesting, make a difference in the world today and for generations to come. Glance back once in a while, and be proud of who you are. Contribute your time and talent, or make a donation now...

Contact us directly to make a donation by check at: http://mesamedia.org/Donate_today.html

or visit our donations page that accepts credit cards at:
<https://azgives.org/c/GivesDay/a/mesamedia/donate/>

Mesa Media is a non-profit organization: when you purchase materials or when you make a donation, the funds are used to produce new materials.
Eskweli for your contribution!

Answers to the Hopi Character Traits test:

- **15 to 22 points:** Is haw! You have fantastic Hopi character traits.
- **23 to 30 points:** You are on your way keep working on your Hopi character.
- **31 to 45 points:** Is ohi!!! Where is the Hopi in your character?! ...it is not too late. Life is a learning process. Start today! Climb the ladder one-character trait at a time.

***Hakiy Nuumi'atningwuqa* – Character Traits**

Itam okiwat akw yeese.
We live with humility.

Hak naakyaptsi'ytangwu.
Have mutual respect.

Hak hiita qa öönangwu.
Never be lazy.

Hak hiita ep qa pas naakya'ytangwu.
Do not be timid.

Hak qa itsivumokiwtangwu.
Do not be mad.

Hak paas hakiy aw tuuqaytangwu.
Be a careful listener.

Hak hiita qa kyaakyawnakyangw tuuvaasi'ytangwu.
Be generous and kind.

Hak hakiy aw yante' hakiy angqwvine' put ep hakiy kyaptsi'ytangwu.
Acknowledge and respect kinship and clanship.

Hak hiita hiita'yte' put tsuyakiwtangwu.
Be appreciative and thankful.

Hak hakiy aw suyan unangwa'ytangwu.
Show positive feelings toward others.

***Suyan unangwat ep wuwni.* – Spiritual Concerns**

Hak naap hikwis'ytaqey put aw kyaataymangwu.
Respect the sacred nature of self.

Hak kyaptsivewat lavayit akw hintsakngwu.
Have reverence and care of speech.

Hak hiita inihit/unihit kyaptsi'ytangwu.
Respect the sacred.

Hak qa hiita nukurhintaniqat wuwwantangwu.
Do not carry expectations of negative circumstances.

Hak qa pas hiita akw wuwanmokiwtangwu.
Do not overburden yourself and mind.

Lavayit akw himu su'antaniqa pasiwta, pam put aw antsani'yta.
Language provides moral structure and control, it sets boundaries.